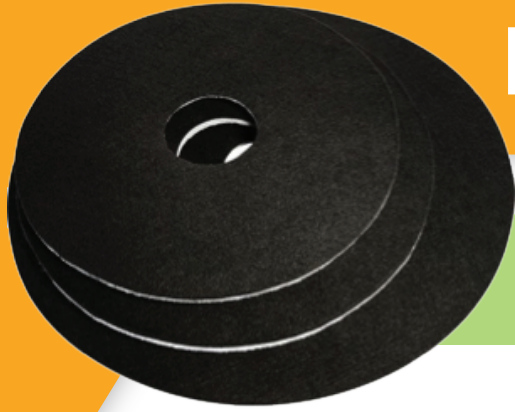


RUNSHINE DAILY MAINTENANCE PAD



SPECIFICATIONS

1.0 DESCRIPTION

The RunShine Daily Maintenance Pad is a high efficiency, effective cleaning product that also saves time and money. The product provides users with a cleaner and smoother floor. It improves and maintains the appearance of a coated polished floor economically. The Daily Maintenance Pad is made of a combination of dense synthetic non-scratch fibers, which reduces the amount of water required in the cleaning cycle. The pad is designed to use with an auto scrubber.

2.0 FEATURES

- Easy to use and install
- Highly efficient and economical
- Multipurpose: works on multitude of hard surfaces
- Eco friendly
 - Up to 50% less water usage than standard red maintenance pads
 - Over 10 times longer life than red pads on most floors
 - Saves up to 50% of the soap used with red daily pads
 - Contains no VOC (Volatile Organic Compounds)
- LEED building benefits*

* The intent of the Water Use Reduction credit is to "maximize water efficiency within buildings to reduce the burden on municipal water supply and wastewater systems." One point is awarded for reducing water use by 20% and two points for reducing it by 30%.

NOTE: When installing on an auto scrubber, the black non-scratch side is the work surface that contacts the floor.

3.0 USES

The RunShine Daily Maintenance Pad is ideal for chemically sealed and/or coated floors such as:

- Sealed or coated polished concrete
- Terrazzo
- Marble
- Ceramic Tile
- Travertine
- Porcelain
- Natural Stone
- VCT
- Linoleum

4.0 PROCEDURES

- Ensure floor is free of large objects that could damage the auto scrubber
- Install RunShine Daily Maintenance Pad on auto scrubber with black side down
- Reduce the auto scrubber water flow to just keep the pads wet
(Note: Can be as much as 50% less water than when using a daily red pad).
- Scrub the floor and pick up the water with the vacuum squeegee.
- Clean daily.

5.0 SIZES

- 7"
- 9"
- 11"
- 13"
- 14"
- 16"
- 17"
- 20"

6.0 MAINTENANCE OF RUNSHINE PADS

Rinse and clean pads thoroughly with water after each use to maximize life. Hang or stand on edge to dry and store appropriately.

7.0 WARNING

1. Use the recommended procedures and equipment.
2. DO NOT allow use by untrained operators.
3. Always follow standard safety practices and wear appropriate protective equipment.

8.0 WARRANTY

This information is based on laboratory testing and results. Because of variations in methods, conditions and equipment, each user must test this product to make a judgment of effectiveness and performance. The product warranty obligation is limited to the refund of purchase price or replacement of the product if proven to be defective. Claims must be made in writing and received within one year from the date of product sale to the original buyer. Sole remedy shall be the replacement of the product proven defective.

CONTACT US:

☎ 855-378-4111

✉ info@maincleaningsolution.com

🌐 maincleaningsolution.com

